



Pit Bull Safety Cover®

Installation Manual

CABLE SYSTEM

Light Duty

Pit Bull Safety Cover® Cable System

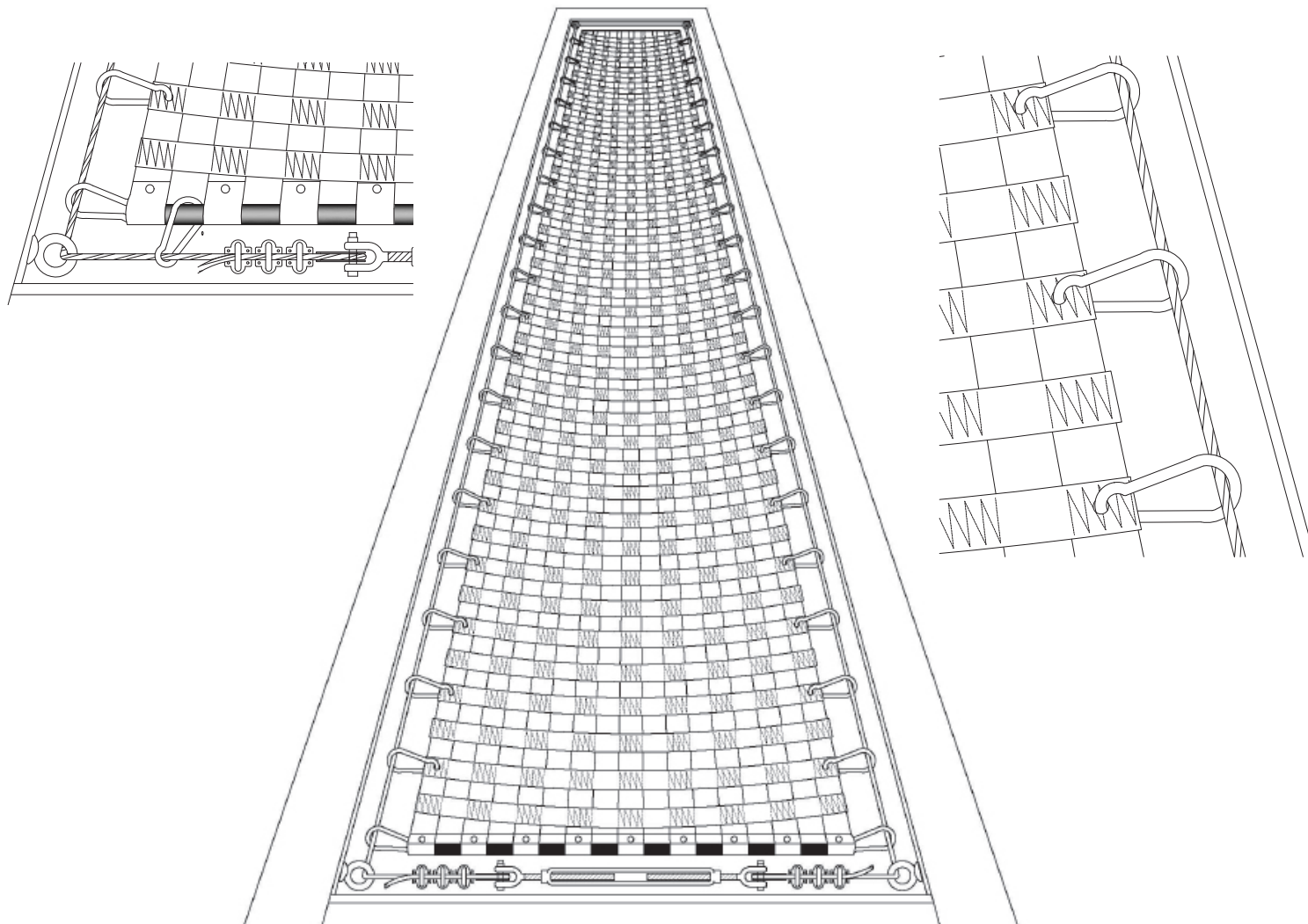
Congratulations on your purchase of the Pit Bull Safety Cover®.

Your cover is designed and constructed to “reduce” or minimize injuries sustained in the course of normal use when installed correctly is not only reliable but convenient to those who use it.

Your Pit Bull is removable and very easy to clean. The polyester fiber does not absorb water, grease, or oil.

Pit Bull is knot-free and exceeds OSHA/CFR safety standards.

If you have any questions or comments, feel free to contact one of our representatives at 832-515-8385.



WARNING

An improperly installed Pit Bull Safety Cover® can become unstable and/or malfunction causing serious injury.

READ THESE INSTRUCTIONS CAREFULLY! FAILURE TO FOLLOW THESE INSTRUCTIONS CAN DAMAGE THE PRODUCT OR CAUSE THE PRODUCT TO NOT PERFORM CORRECTLY.

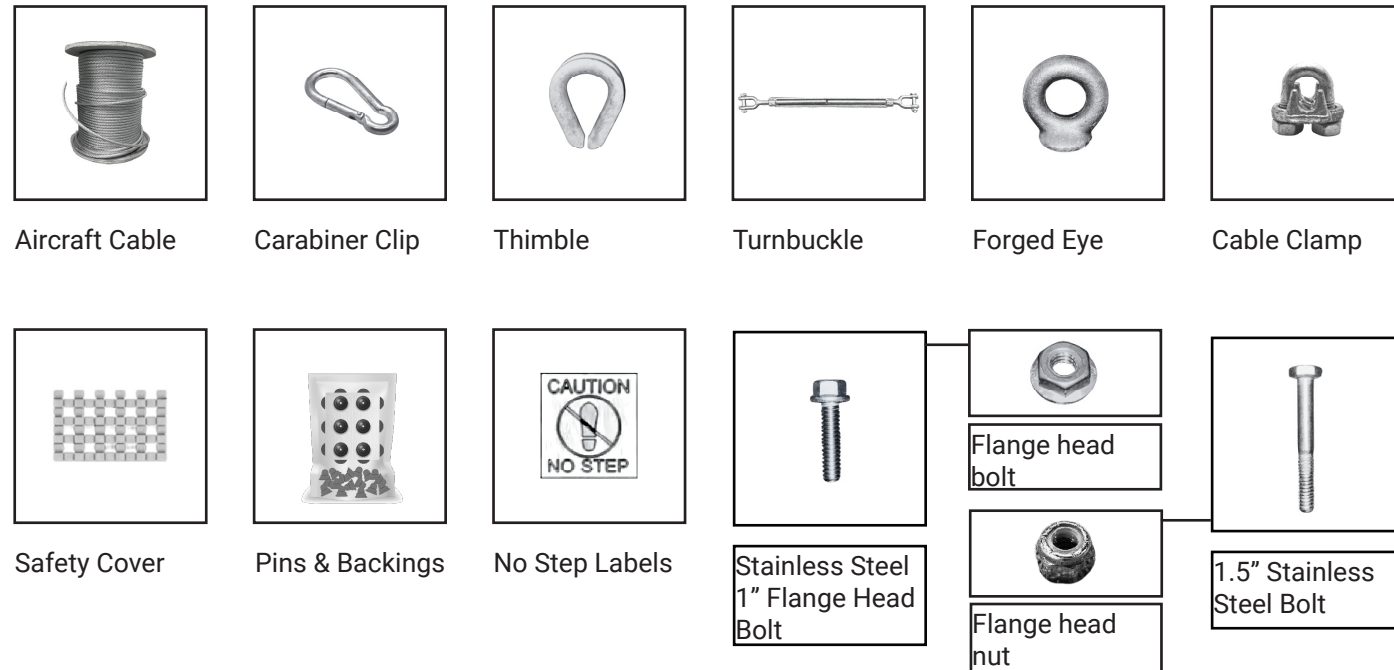
Before you begin:

1. Please read this manual in its entirety before you begin the installation process.
2. Follow all instructions thoroughly.
3. **EXTREMELY IMPORTANT!** Prepare the work area, be sure that all flammable products have been removed from the service bay and that any paint, grease, or debris has been removed from the area before any welding begins.
4. Use only a certified welding technician that is knowledgeable in safety compliance and is aware of the area and all safety precautions that need to be engaged.
5. Please follow all General Welding Practices.

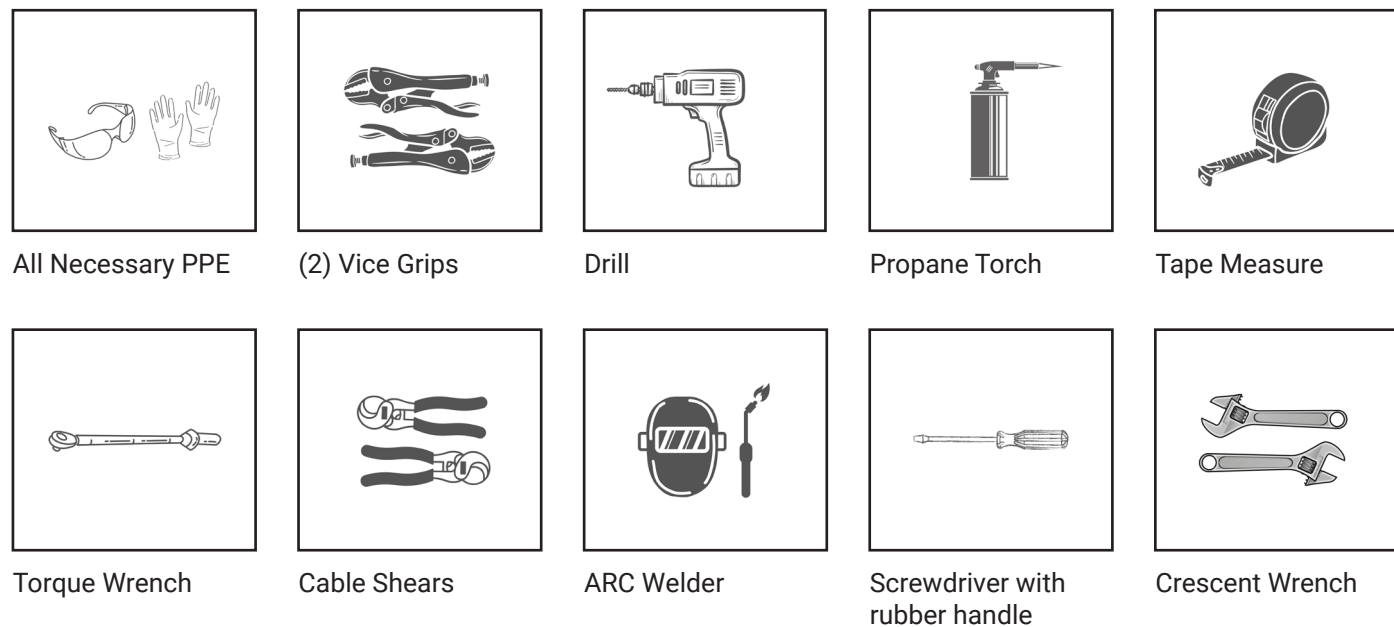
Scan QR Code for Cable System video Installation Instructions



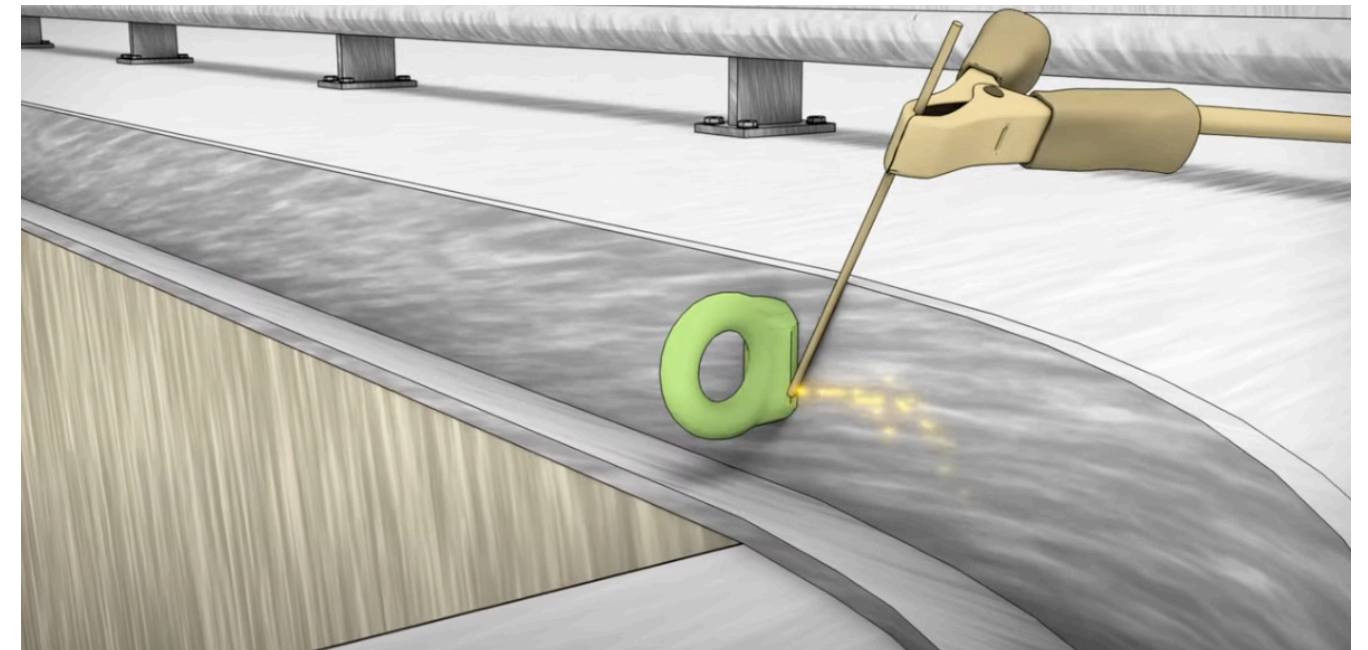
MATERIALS PROVIDED:



MATERIALS NEEDED:



Step#1: Start the installation process by welding forged eyes on all four corners of your pit opening and place turnbuckle on passive end. Refer to example.

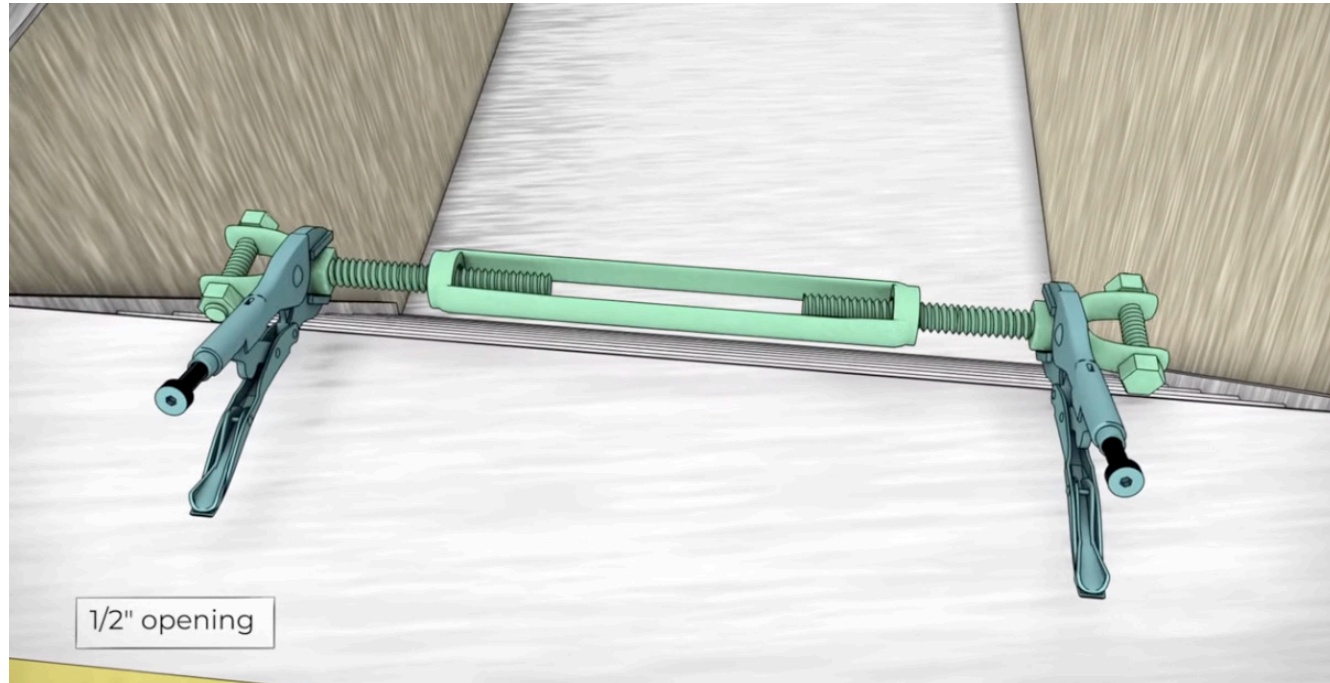


*** For pits of 25' or longer your Pit Bull Cover® will come in split sections.**

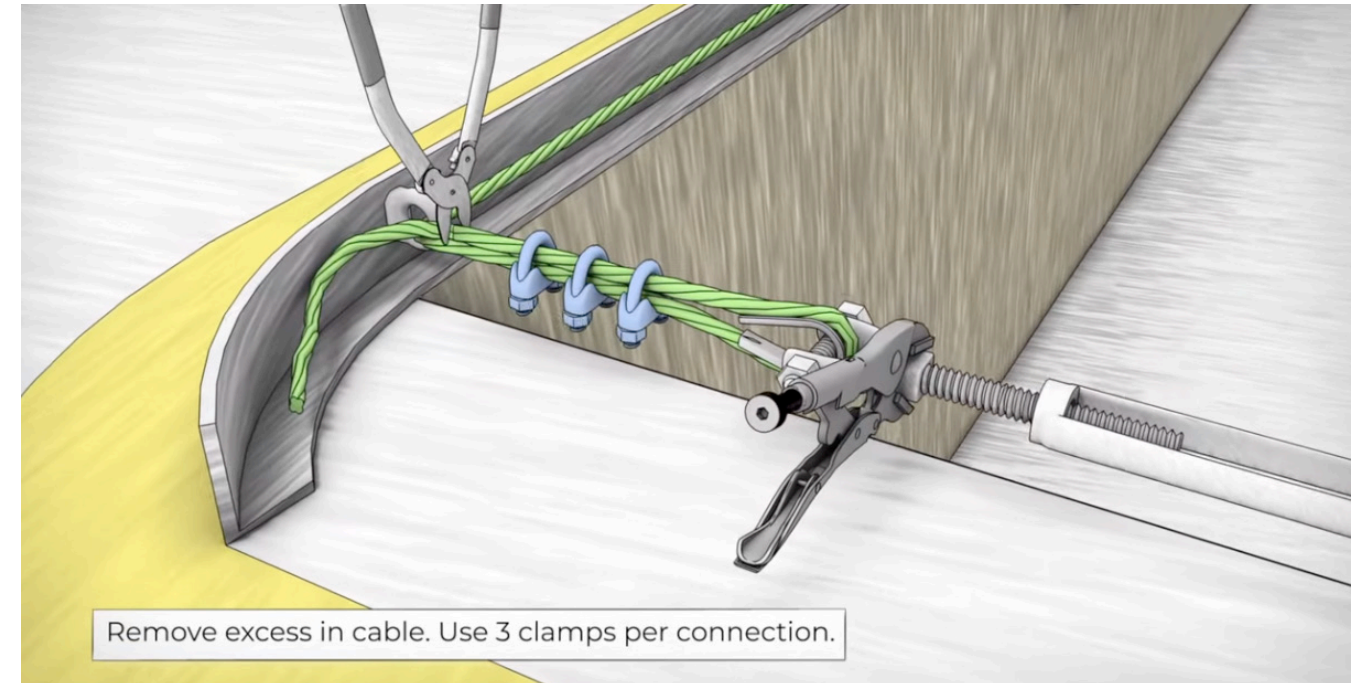
Install another forged eye in the middle of the bay along each side.



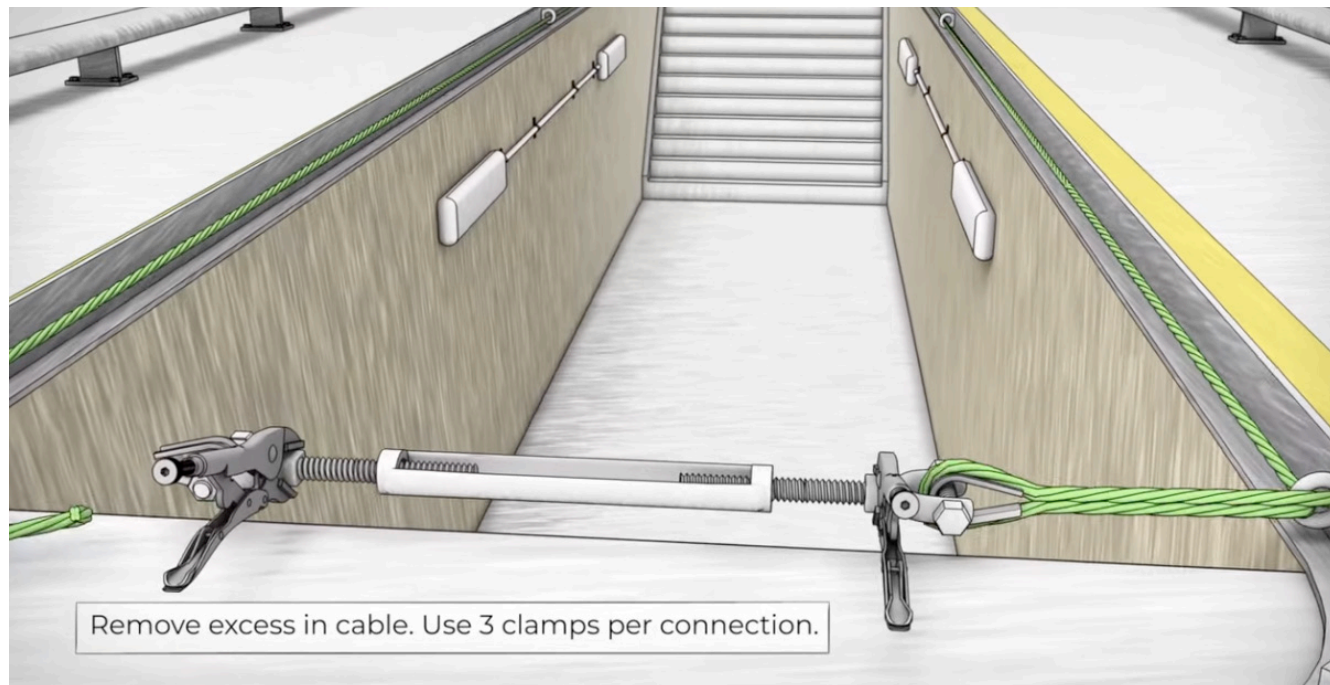
Step #2: Expand the turnbuckle completely



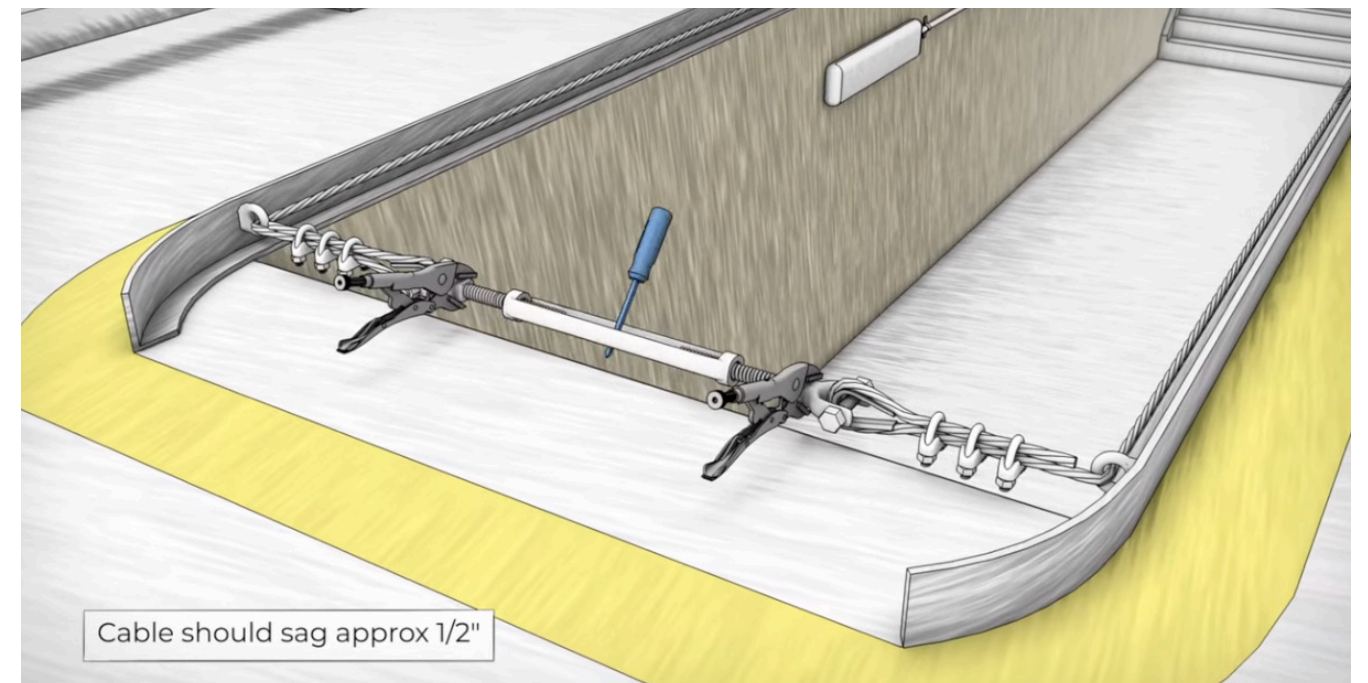
Step #4: Tighten the cable as much as possible and clamp it in place. Use 3 clamps per connection. Remove excess cable with cable shears.



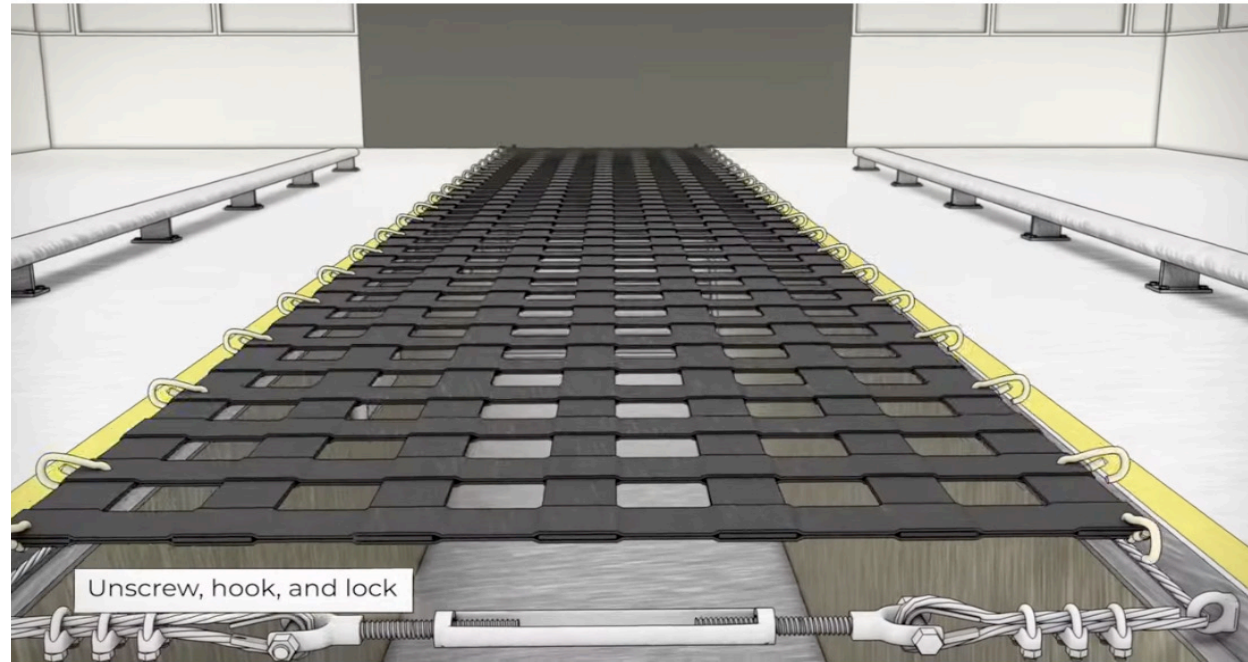
Step #3: Run aircraft cable through forged eyes and around thimble until the desired length is met



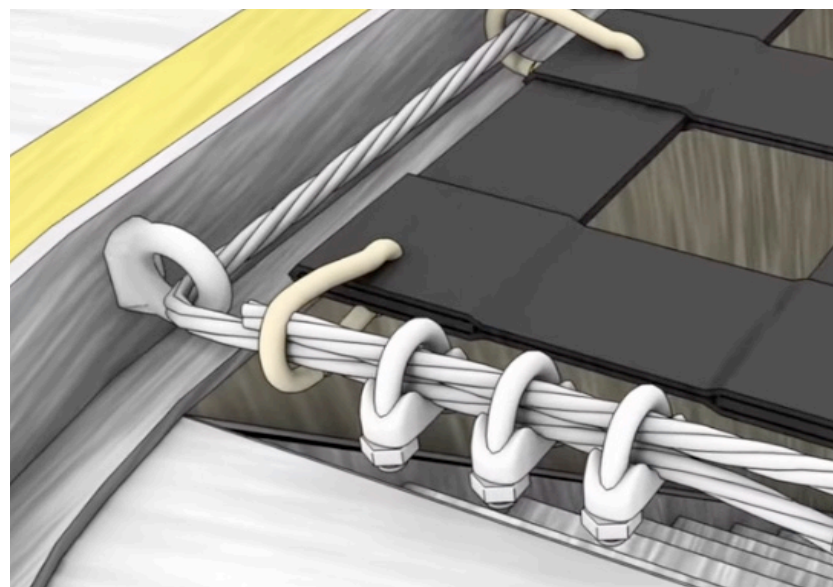
Step #5: Twist the turnbuckle, by inserting the head of a Phillips screwdriver into the center to gain Leverage, and tighten the cable to desired tension.



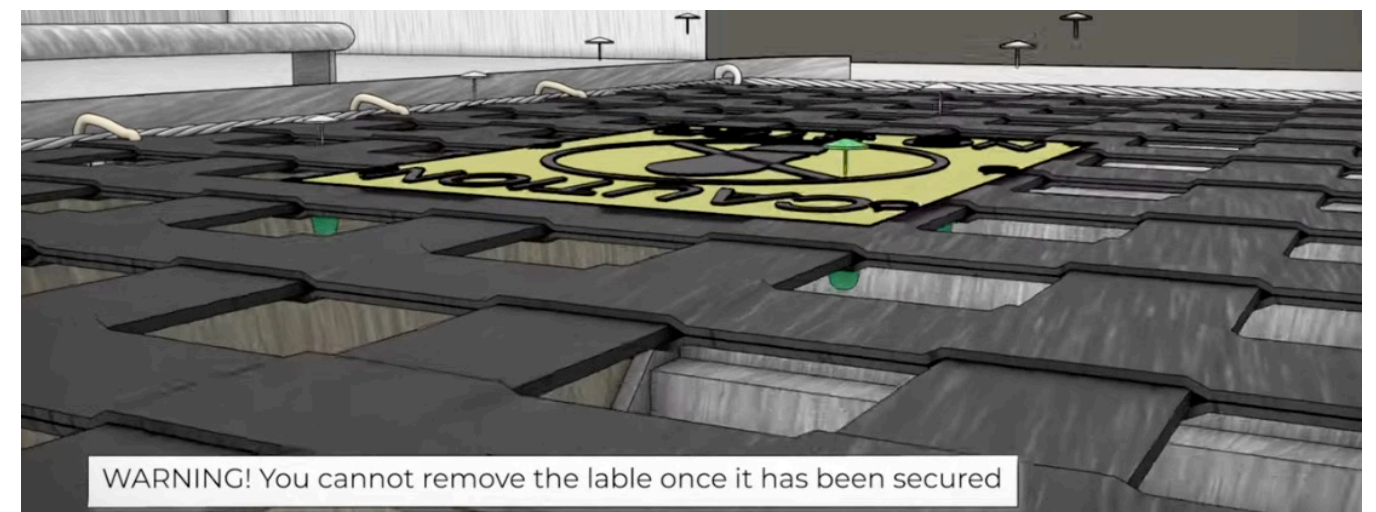
Step #6: Connect your Pit Bull cover by unscrewing each carabiner and hooking it onto the cable and secure.



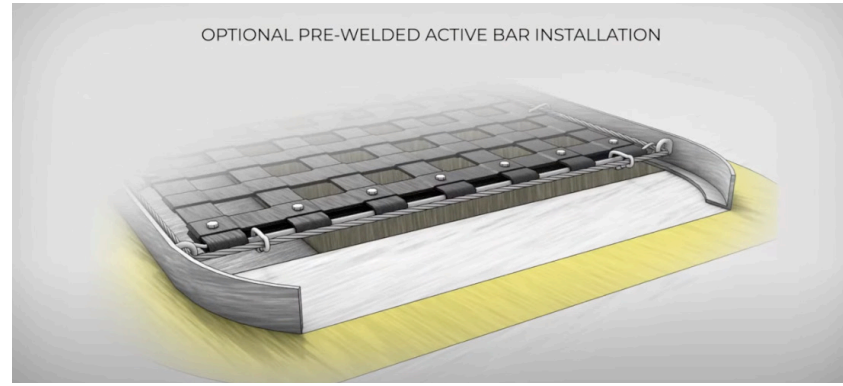
Step #7: On the passive end attach the last carabiner on each corner to the cable past the forged eyes to keep it in the locked position at all times.



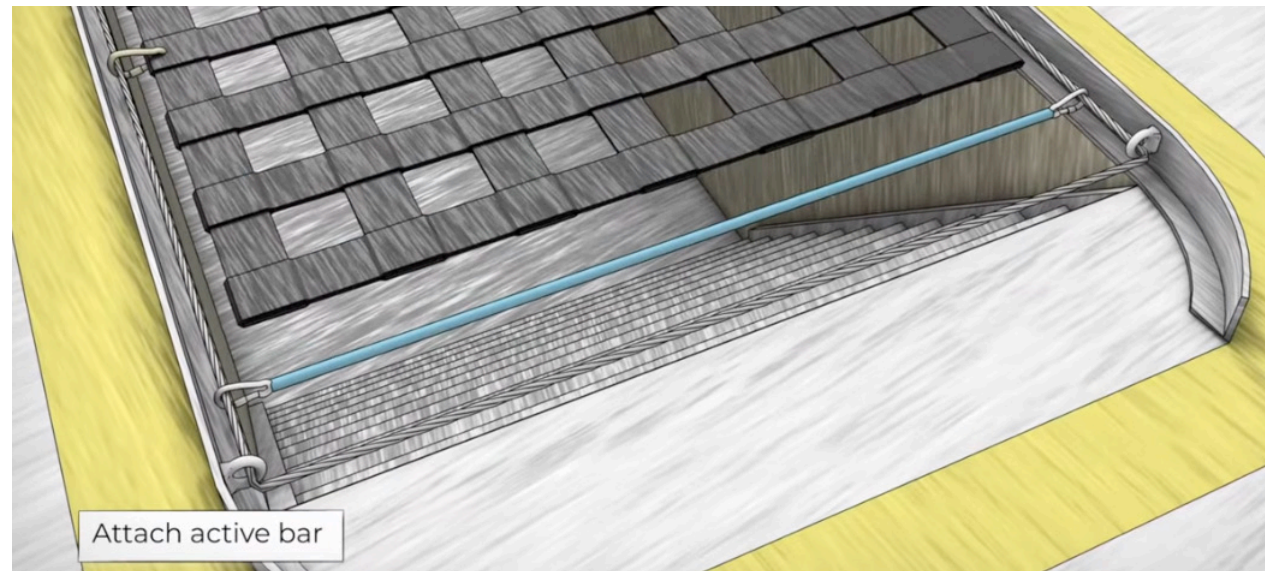
Step #8: Finally, place your "NO STEP" sign about 3 feet from both ends using top and bottom magnets to secure it in place.



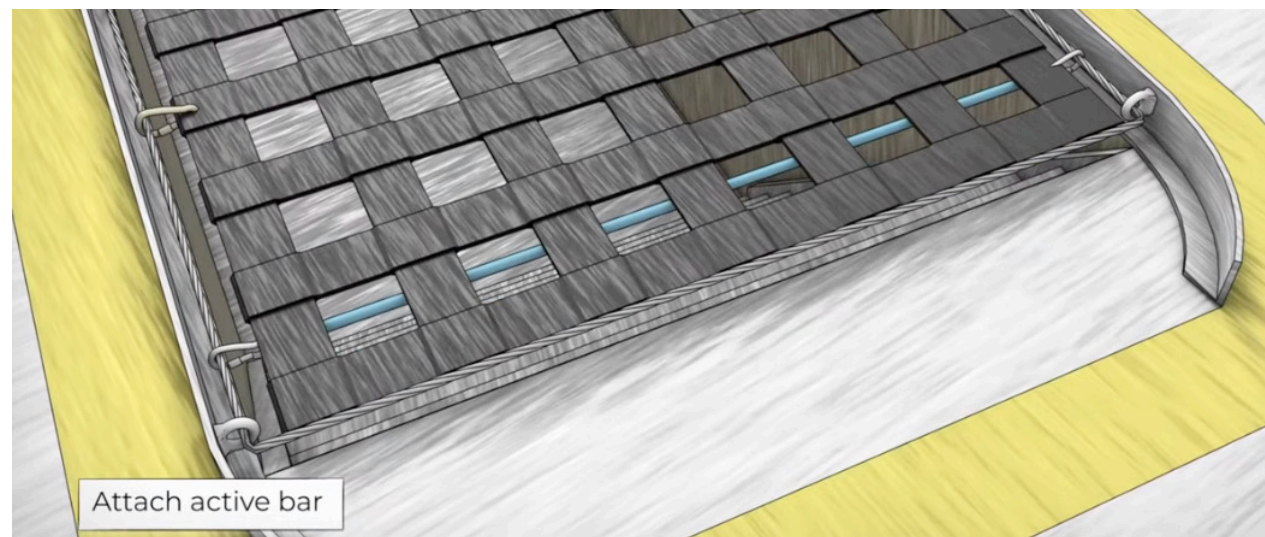
OPTIONAL PRE-WELDED ACTIVE BAR INSTALLATION INSTRUCTIONS



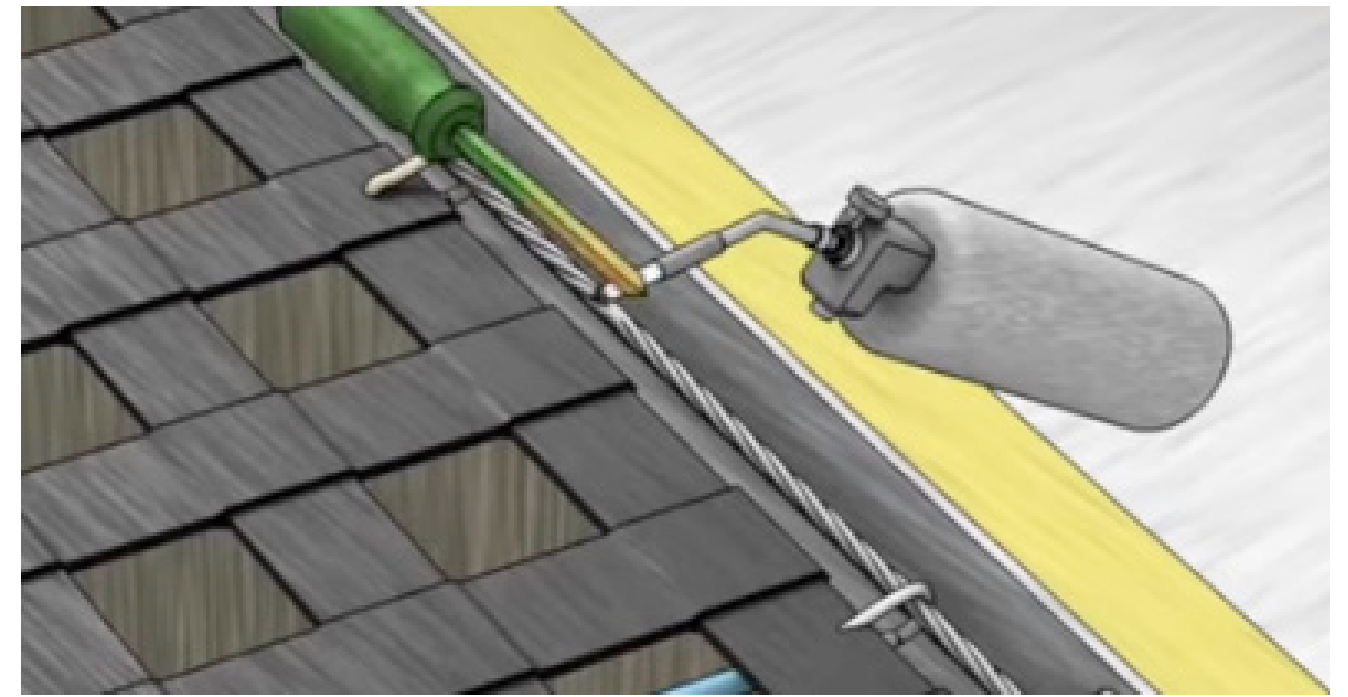
Step #1: On the active end attach your pre-welded bar to the end cable.



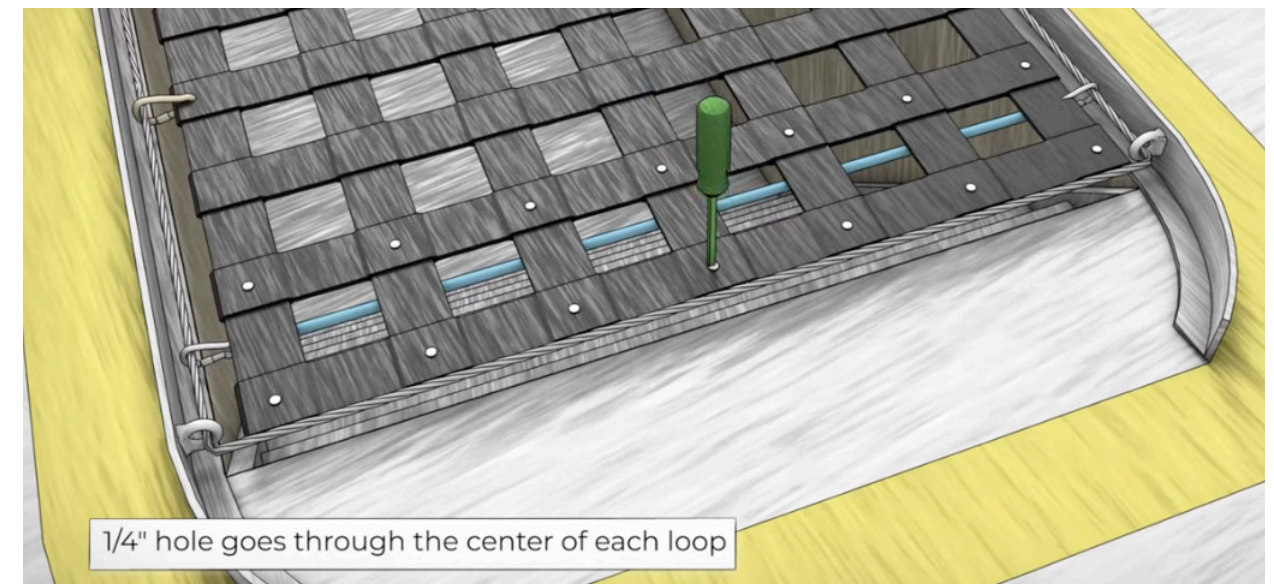
Step #2: Expand your cover to the desired length.



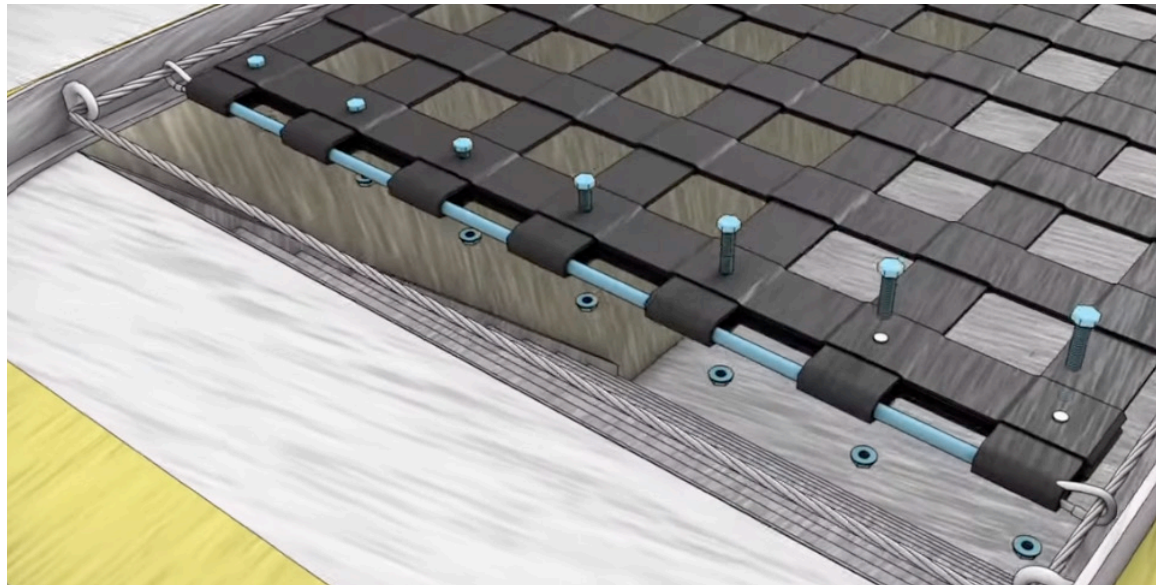
Step #3: Using a propane torch heat the head of a screwdriver until red-hot. Poke holes through the crisscross fabric on the bottom two rows of your Pit Bull Safety Cover®



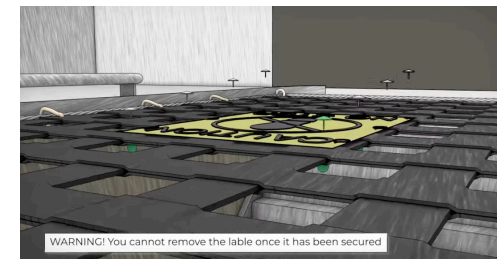
Step #4: Poke holes through the criss cross fabric on the bottom two rows of your Pit Bull Safety Cover®



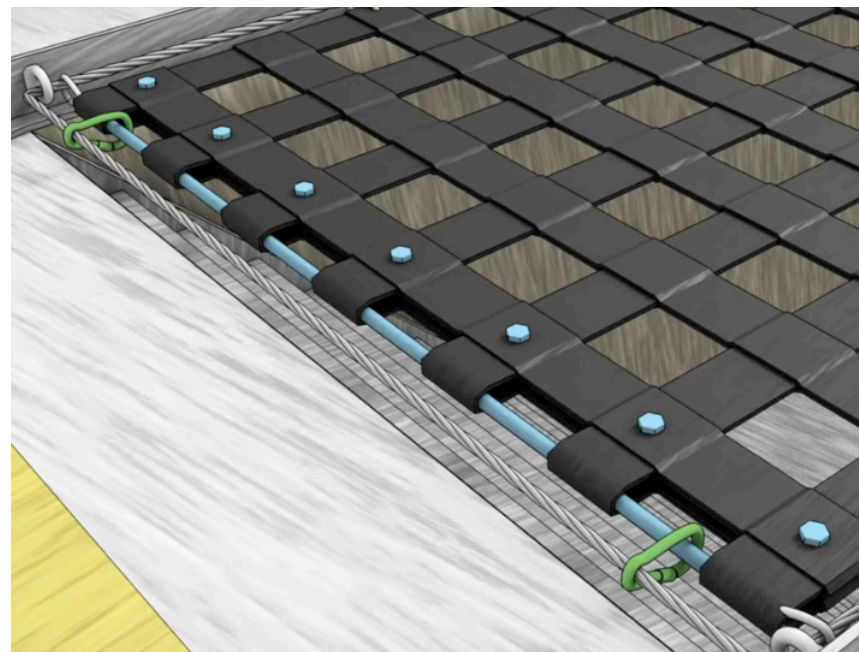
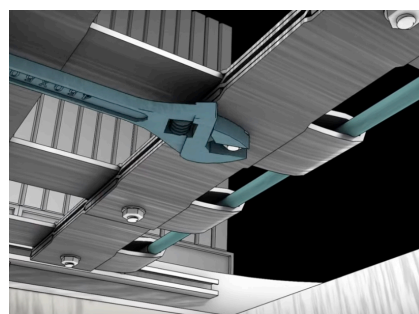
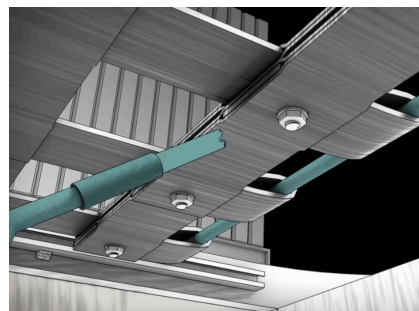
Step #5: Fold the fabric ends over the rod creating a pocket and secure it with the screw and nut use the washer to narrow holes if necessary.



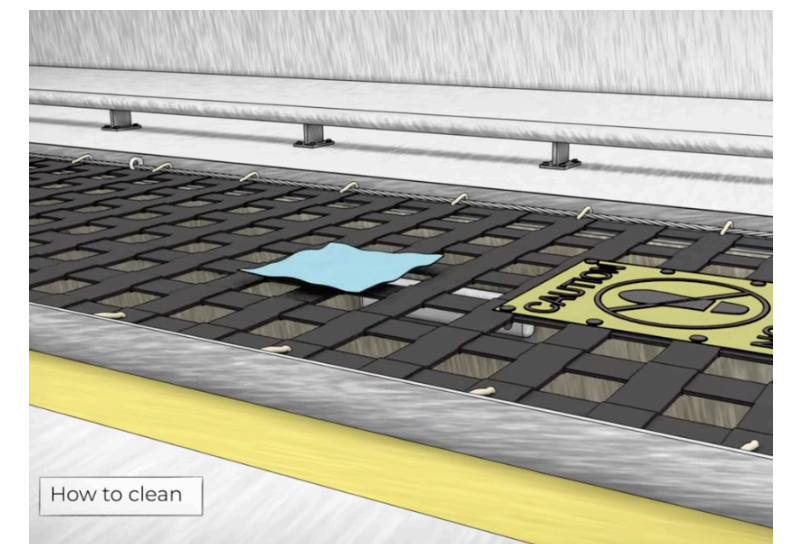
Step #7: Finally, place your "NO STEP" sign about 3 feet from both ends using top and bottom magnets to secure it in place.



Step #6: Use a blowtorch to burn off any excess fabric and seal the edges. Then tighten bolts to secure them in place.



With a clean shop towel, use mild detergent and warm water to clean off your cover. Use a dry clean towel to dry.



Your Pit Bull Safety Cover® Cable system installation is now complete. If you have any questions about processes or materials, please call a representative today.

CARE & MAINTENANCE

It is not necessary to remove your Pit Bull to clean if you generally wash your pit area from top to bottom. However, in order to get the maximum life from your Pit Bull Safety Cover®, we recommend you follow the care and maintenance instructions below.

Professional Netting Concepts LLC. suggest you use a bleach-free soap, such as DAWN Dishwashing Liquid or Woolite Laundry Detergent, and hot water. Both products are mild detergents that will not harm your cover. With a medium-stiff brush, apply soap and water over the Pit Bull and scrub. Rinse thoroughly.

Cornstarch or baby talc can be used to remove stubborn grease stains. Brush off loose dirt, cover the stain with cornstarch or baby talc, and leave on the grease spot overnight. Then brush off the cornstarch or baby talc. Most, if not all of the stains should disappear. However, if necessary repeat the process.

For a DEEP CLEAN you can remove your Pit Bull Safety Cover from the channel and take it to your nearest car wash. Use the foaming brush or high power washer to clean your Pit Bull Safety Cover®. You may use the same process to clean your No Step labels.

WARNING!!!

NEVER USE strong cleaners, petroleum-based products, or bleaches (this includes Oxi-clean) Avoid using any harsh chemical or industrial strength cleaners. DO NOT use any cleaning agent that is a solvent-based or solvent-containing cleanser. These are typically called degreasers. The use of degreasers over time will fade or lessen the strength of the webbing material. DO NOT use any kind of hydrocarbon solvent, it was found to weaken the webbing considerably.

The information contained in this manual is the exclusive property of Professional Netting Concepts, L.L.C. and protected by copyright and other proprietary rights. Nothing contained in this manual may be reproduced, distributed, or edited in any manner without the prior written authorization of Professional Netting Concepts, L.L.C. No reproduction is permitted without specific written authorization. You may not distribute, modify, transmit, reuse, repost, or use the contents of this information for public or commercial purposes, including text, images, prices, or other information without Professional Netting Concepts, L.L.C. written permission.

ONE-YEAR LIMITED WARRANTY

PARTS – New parts in exchange for the defective parts for one (1) year after the original purchase (excluding shipping and handling charges). This warranty only covers failures due to defects in material or hardware which occur during normal use. It does not cover failures due to damage in shipment, or failures that are caused by products not supplied by Professional Netting Concepts, L.L.C., or failures that result from an accident, vehicular traffic, misuse, abuse, neglect, mishandling, misapplication, alteration, faulty installation (by others not directly employed by Professional Netting Concepts, L.L.C., and any modification. The warranty does not cover damage caused by fire, floods, hurricanes, cyclones, tornadoes, earthquakes, or any other extraordinary or unusual event. In no event shall Professional Netting Concepts, L.L.C. be liable for any consequential damages or for damages to the building or its contents or injury to its occupants.

INSTALLATION – Professional Netting Concepts, L.L.C. will only repair manufacture installations and/or replace your cover free of charge in the U.S.A. in the event of a defect in workmanship or material. Installation warranties are only given on manufacturing installations. Manufacture Installations include a one (1) year warranty from the date of installation. Any person, not directly employed by Professional Netting Concepts, L.L.C. performing installations of Pit Bull Safety Covers will not be covered by the warranty.

This warranty is extended only to the original purchaser. Proof of purchase will be required before warranty performance is rendered. The warranty shall be void if Professional Netting Concepts, L.L.C. fails to receive full payment. This warranty gives you specific legal rights and you may also have rights that vary from state to state. If a problem with your Pit Bull Safety Cover develops during the warranty period, please contact a representative with Professional Netting Concepts, L.L.C.

